

**OCT. 2ND, 2023 CCC XC CHAMPIONSHIPS  
HOSTED BY SHELBY COUNTY R-4**

**CONTACT INFORMATION:**

**ROB WILT, [RWILT@CARDINALS.K12.MO.US](mailto:RWILT@CARDINALS.K12.MO.US) 573-822-4053, HS AD  
TAYLOR O'LAUGHLIN, [TOLAUGHLIN@CARDINALS.K12.MO.US](mailto:TOLAUGHLIN@CARDINALS.K12.MO.US) 573-822-2208 MS AD  
**TRXC TIMING LLC, [RICH@TRXCTIMING.COM](mailto:RICH@TRXCTIMING.COM), 314-522-6176  
MSHSAA OFFICIAL- MIKE BARNER****

ALL ENTRIES ARE THROUGH [MOMILEPLIT](#). EVERYONE SHOULD HAVE AN EMAIL INVITATION  
ALREADY.

**ENTRIES ARE DUE 9 AM SEPT 29TH**

**THERE WILL BE A CONCESSION STAND FOR PARENTS, COACHES, AND ATHLETES AT  
THE GOLF COURSE CLUBHOUSE.**

**THERE WILL BE A COMPANY ON SITE MAKING SHIRTS.  
PLEASE SEND ONE OF US AN EMAIL WITH AN ESTIMATED NUMBER OF SHIRTS.  
[DONEAL@CARDINALS.K12.MO.US](mailto:DONEAL@CARDINALS.K12.MO.US) HS CROSS COUNTRY COACH  
[KBOWEN@CARDINALS.K12.MO.US](mailto:KBOWEN@CARDINALS.K12.MO.US) MS CROSS COUNTRY COACH**

**TEAMS (HS AND/OR MS TEAMS)**

Brookfield, Centralia, Clark County, Highland, Macon, Monroe City, Palmyra, and South Shelby

**OCTOBER 2ND SCHEDULE**

**3:30** - Coaches Meeting  
**4:00** - Middle School Girls and Middle School Boys (Medal Top 10 in each division)  
**4:30** - High School Girls (Medal Top 14, first 7 are first team, 8-14 are second team)  
**5:00** - High School Boys (Medal Top 14, first 7 are first team, 8-14 are second team)  
Team Plaque/Trophy presented at the conclusion of the High School Boys Race

**TENT AREA**

Please be sure not to place them too close to the course or other teams. **Tent City will be on the Hole 1 fairway.**  
**Please be sure to stay off the greens!**

**COURSE**

Location: Shelbina Lakeside Golf Course 5364 Golf Course Dr, Shelbina, MO. **ALL buses** will need to use the gravel road on the left just past the main entrance of the lake. The course is marked with a solid white line and survey flags at each turn. There are a few gravel and dirt cart paths. We will have a lead and trail golf cart to support runners.

**TIMING METHOD**

The primary scoring method will be through Chip Timing. TRXC Timing uses shoes chips that will need to be returned. Any chip not turned in or lost will result in a \$25 charge to that school!!

**RESULTS**

Results will be available live during the meet at [TRXC Timing](#) (pending reliable internet connection) and will be uploaded to MOMileSplit afterward as well.

**BOX ASSIGNMENTS**

**HIGH SCHOOL**

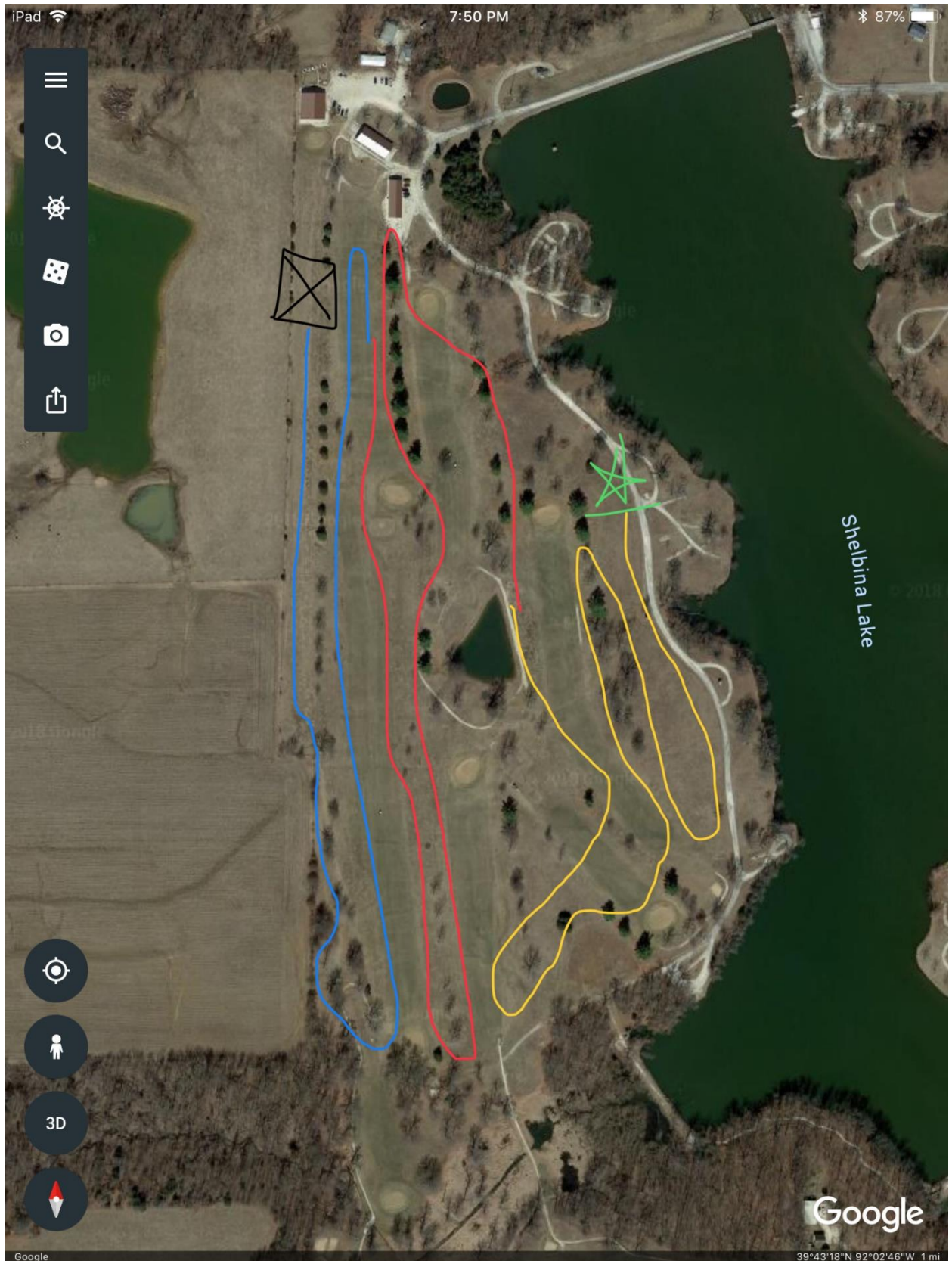
**MIDDLE SCHOOL**

**BOYS**

**ROSTERS**

**GIRLS**

**1<sup>ST</sup> MAP IS THE HS RACE MAP**



2<sup>ND</sup> MAP IS THE MS RACE MAP

